

Tactical Collaboration, Shared Situational Awareness, and Autonomous Enterprise Services for Deployed Teams



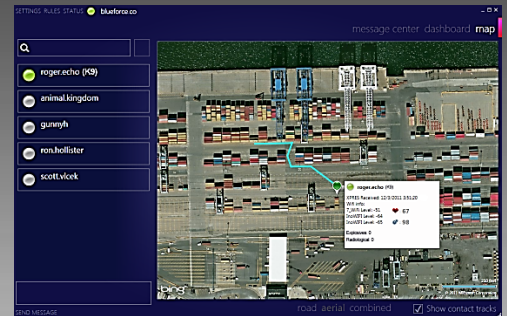
Blueforce Command Center is a Microsoft Windows server or client application that enables the rapid formation of tactical teams and facilitates rich information sharing amongst team members. The software, which can scale to thousands of subscribed endpoints and can run attended or autonomous, provides shared situational awareness of people, sensors, and services; and it enables secure collaboration between them.

Blueforce's Tactical Presence Protocol fuses geo-location, network location, health, and sensor data into a presence heartbeat that is light on the network, yet provides complete tactical awareness as to where your people are and what's going on around them. Command Center provides a just-in-time Dashboard that allows the enduser to construct a mission-specific view using drag-and-drop gestures. Command Center is interoperable and provides real-time to KML for use with GIS or other C4ISR tools.

Blueforce Command Center is extensible and provides a plug-in interface for integration of a multitude of sensor types and/or enterprise information services. Command Center provides a mission critical command and control solution for life safety, mission efficiency, and the movement of perishable tactical mission data amongst team members and commanders.

Key Features

- Tactical Presence: Location, health, and status fused to provide complete awareness of each endpoint.
- Secure: Uses FIPS 140-2 certified cryptographic provider for authentication and encryption, on disk and over the air.
- Information Sharing: Share pictures, floor plans, biometrics, or any file-based object.
- Scalable and Interoperable: Supports thousands of subscribed endpoints and provides presence output as real-time KML for use with GIS or C4ISR systems.
- Manned or Unattended: Can be used as a tactical manned command and control endpoint, or housed in a data center as an autonomous platform which can provide bi-directional information services to subscribed endpoints.



- Shared Tactical Situational Awareness
- Decentralized Command and Control
- Intelligence, Surveillance, and Reconnaissance (ISR)
- Life Safety and Occupational Health Monitoring
- Autonomous agent platform

System Requirements

- CPU: 1Ghz or better Intel® Core™ i3 or i5 Processor
- OS: Windows Vista or Windows 7; Windows Server 2008 or higher with .NET Framework V4 or higher.
- SCREEN: 1024 x 768 minimum
- MEMORY: 128MB
- STORAGE: 25MB for core application
- NETWORK: 128kbps or faster TCP/IP internet connection
- ACCOUNT: XMPP/Jabber account (i.e., GoogleTalk, Apple iChat, Cisco Collaboration, Oracle Collaboration, OpenFire) for WAN communications

Contact Us

For more information, please contact:
Blueforce Development Corporation
217 Essex Street, Suite 21
Salem, Massachusetts 01970 USA

Telephone: 866.960.0204
Fax: 866.801.9650
Email: sales@blueforcedev.com
Web: www.blueforcedev.com