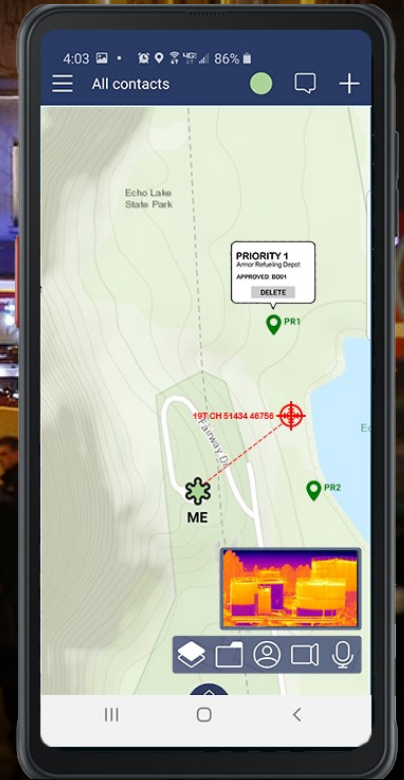


PRODUCT DATA SHEET

BLUEFORCE TACTICAL



Integrated location, sensor data, and AI made sharable using Blueforce's dynamically composable, adaptive, and goal-driven IoT mobile edge compute software platform

BlueforceTACTICAL (BTAC) obliterates traditional IoT and AI information stovepipes by fusing location, and real-time human and sensor data across multiple modalities, collapsing the distance from sensor to analyst to responder, and accelerating recognition decision-making by widening the decision-maker's aperture to greater numbers and types of sensor inputs. BTAC is field proven (US DoD TRLg) and enables operators to extend their capabilities, share information horizontally, and swarm faster than their adversaries by communicating with devices that are installed at fixed locations, carried, mounted on manned and unmanned systems, or worn on the body. Most importantly, BlueforceTACTICAL is sustainable with a world-class support organization, extensible API/SDK, and a worldwide network of technology partners.

Speed of Swarm

Dynamic human and sensor discovery, sensor-queuing, and hyperlocal alerting to anticipate phase transitions and emergent threats. Form cross-boundary and cross-domain, confederations of teams, sensors, and services in seconds.

Horizontal Fusion

BlueforceTACTICAL provides self synchronization amongst subscribed human, sensor, and information service endpoints. It breaks stove pipes by fusing data from multiple modalities and then makes it sharable via a single stream of synchronized data.

Agile Extensibility

Field operations are fundamentally non-predictive. Blueforce allows rapid adaptation in the field by allowing the operator to enable and disable capabilities on the fly. Our open APIs enable rapid development of software plugins for new sensors and services.



Shared Situational Awareness of People, Sensors and AI Services using Forward Sensor Fusion with Edge-Based Processing

OS	Android 8.0 or higher; iOS 11.0 or higher
CPU	1Ghz or better, 2-4 core; iOS 64-bit 1.3GHz dual core Apple Cyclone
MEMORY	250-350MB for core appli- cation and base plugins
STORAGE	Use case dependent; 300MB recommended
DISPLAY	800 x 480 minimum
COMMS	256Kbps or faster TCP/IP connection for basic oper- ation; 1Mbps or faster if leveraging ISR/video.
ACCOUNT	XMPP/Jabber account for WAN and LAN communi- cations. Blueforce is opti- mized for OpenFire XMPP switch.

Tactical Presence

Location, network location, device health, and enduser status fused and self-synchronized to provide complete awareness of every endpoint.

Shared Points of Interest

Share team generated map data in real-time using our native GeoJSON capabilities with symbology and support for attached imagery.

Information Sharing

Move information fast! Text and chat securely while also sharing pictures, map and GIS data, processed sensor, and other mission data.

Rapid Adaptation

BlueforceTACTICAL provides a future proof plugin platform for sharing of sensors, information services, and bi-directional data streams.

Location Services

BTAC provides a location API and supports native GPS location sharing for outdoor use and inertial navigation sensors for subterranean use.

Multimedia Services

View streaming drone, body worn, unattended ground sensor, and surveillance video or send video using a variety of Blueforce plugins.

FIPS 140-2 Security

Information security at rest and in transit using military grade FIPS 140-2 certified cryptography for authentication and encryption.

Sustainable and Future Proof

Blueforce builds software for sustainability. Contemporary development practices, one code base, and a support organization to back it up.