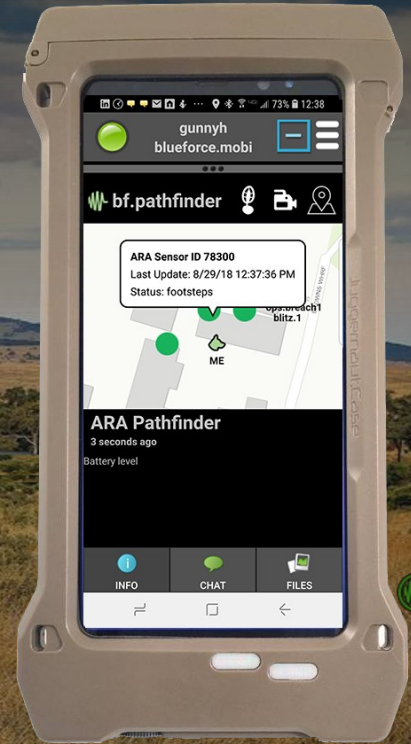


# BLUEFORCE FOR COUNTER-TERRORISM BORDER JOINT TASK FORCES

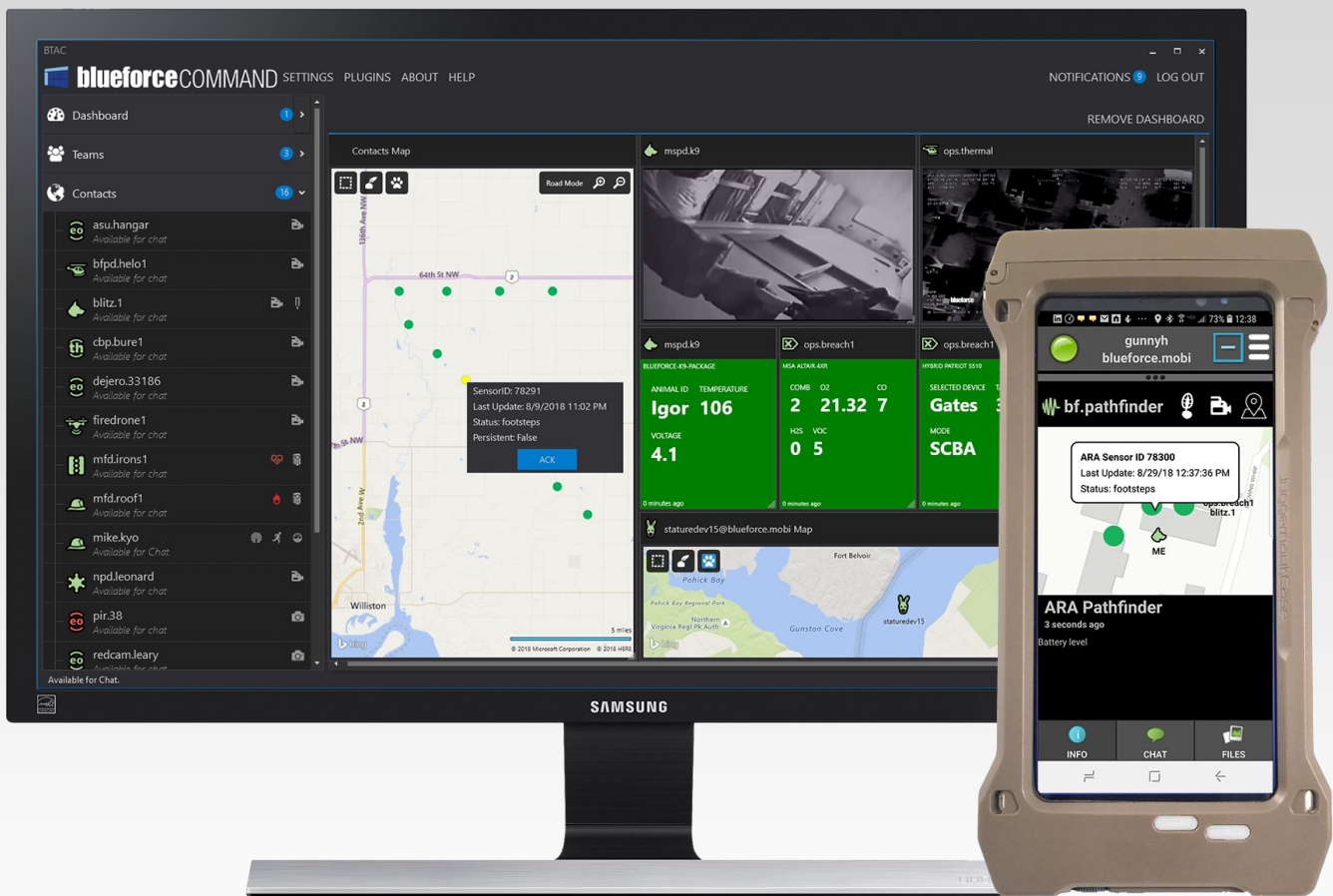


## Multi-domain ISR, MASINT, and SIGINT technical collection and information sharing to combat human and WMD trafficking

Blueforce designed, developed, and provided operational support for a rapidly deployable mobile IoT technical collection and command post capability for a USDoD and homeland security agency in support of nine U.S. border counter-terrorism joint task forces (JTF). The system, powered by BlueforceEDGE mobile edge compute IoT and AI fusion platform and BlueforceCOMMAND, provided sensor data aggregation, technical fusion, sensor correlation, and presentation of actionable intelligence for forward deployed analysts, command post staff, quick reaction forces, and designated HQ facilities. Our plugin-based architecture allowed for rapid extensibility, bringing new ground sensors online in days.

### Deployed operational capabilities include...

- Rapidly/hastily formed IoT networks in denied areas
- Streaming exfil of long-range surveillance imagery
- Standards-based and interoperable IoT data streams
- Single pane of glass command post dashboards
- Interoperable and on-demand data streams to JTF partners.
- Low to high resolution sensor cueing: curtains of detection
- Low resolution sensors to include seismic, PIR, and magnetometer
- High resolution sensors to include RADAR, SWIR, MWIR, and thermal
- Mission support: Ground FSR support provided by Blueforce



## Total tactical awareness of people, sensors, and services

The Blueforce product platform is the next generation mobile technology suite that embraces and extends the last tactical mile vertically, but also horizontally thereby allowing all members of a team, human and Kg, to be on the same page specific to real-time events and information using mobile devices.

### Speed of Swarm

Blueforce enables "team warfare" through the "stand-up" and "tear-down" of secure human, Kg, and sensor networks (in seconds).

### Sensor Sharing

People and Kg's are more than a point on a map. Blueforce extends body worn sensors for shared bio-telemetry, CBRN, signal, and PPE.

### Extensible, Plug-in Platform

Blueforce provides a future proof plugin architecture which enables the departments to leverage legacy and future IoT sensors.

### Secure

Information security at rest and in transit using military grade FIPS 140-2 certified cryptography for authentication and encryption.

### Information Sharing

Move information fast! Text and chat securely while also sharing pictures, floor plans, biometrics, and other collaborative data.

### Built for the Cloud

The Blueforce platform can be leveraged as a shared managed service, or, as a dedicated AWS or Azure instance.



To learn more and request a demo visit:  
[www.blueforcedev.com](http://www.blueforcedev.com)